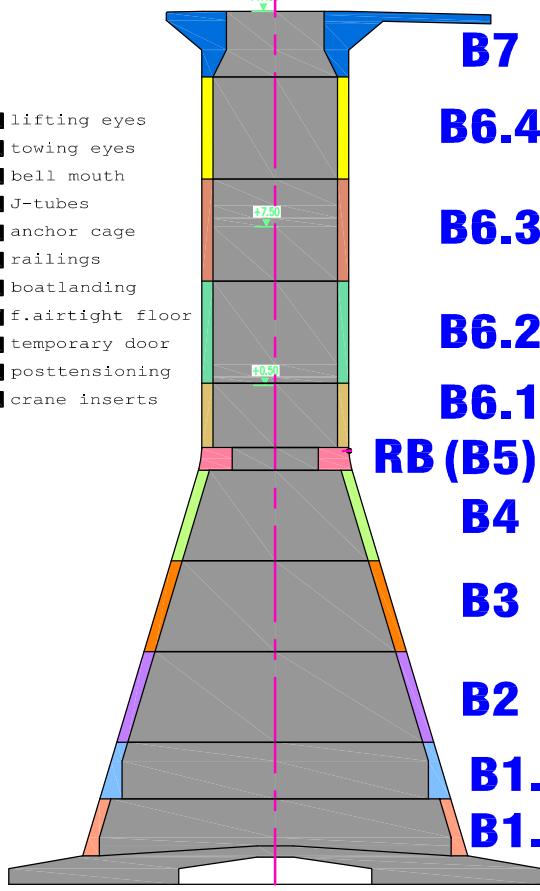


# D1

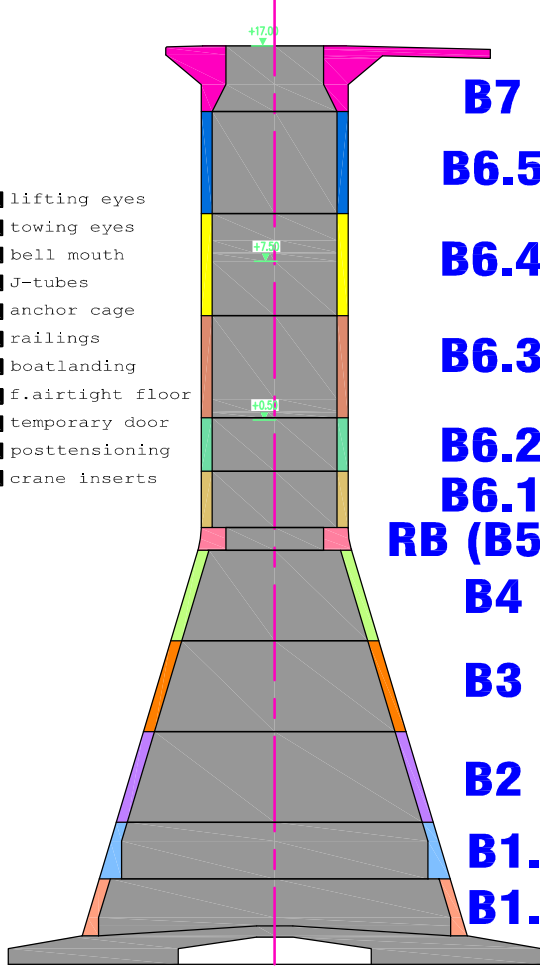
- lifting eyes
- towing eyes
- bell mouth
- J-tubes
- anchor cage
- railings
- boatlanding
- ☑ f.airtight floor
- temporary door
- posttensioning
- crane inserts



**B7**  
**B6.4**  
**B6.3**  
**B6.2**  
**B6.1**  
**RB (B5)**  
**B4**  
**B3**  
**B2**  
**B1.2**  
**B1.1**

# D2

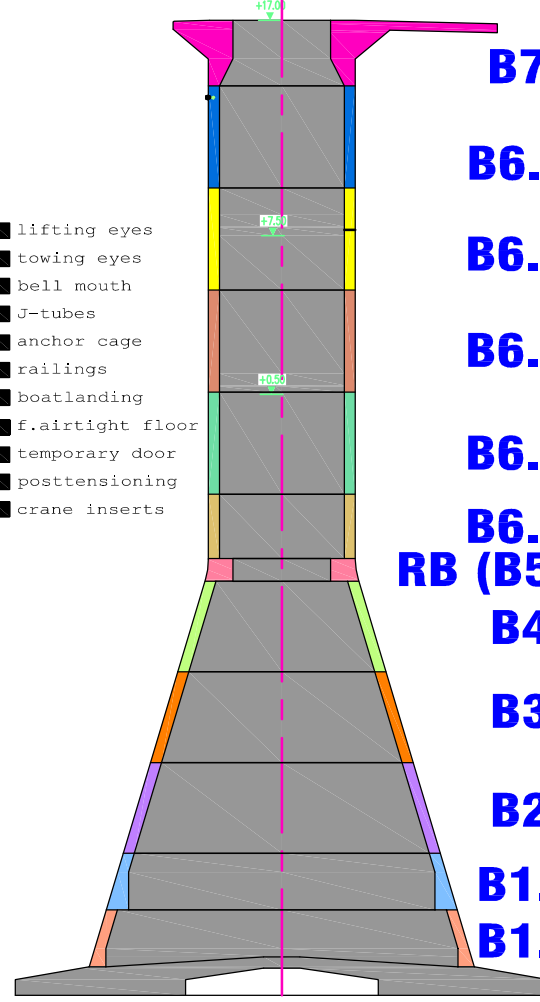
- lifting eyes
- towing eyes
- bell mouth
- J-tubes
- anchor cage
- railings
- boatlanding
- ☑ f.airtight floor
- temporary door
- posttensioning
- crane inserts



**B7**  
**B6.5**  
**B6.4**  
**B6.3**  
**B6.2**  
**B6.1**  
**RB (B5)**  
**B4**  
**B3**  
**B2**  
**B1.2**  
**B1.1**

# D3

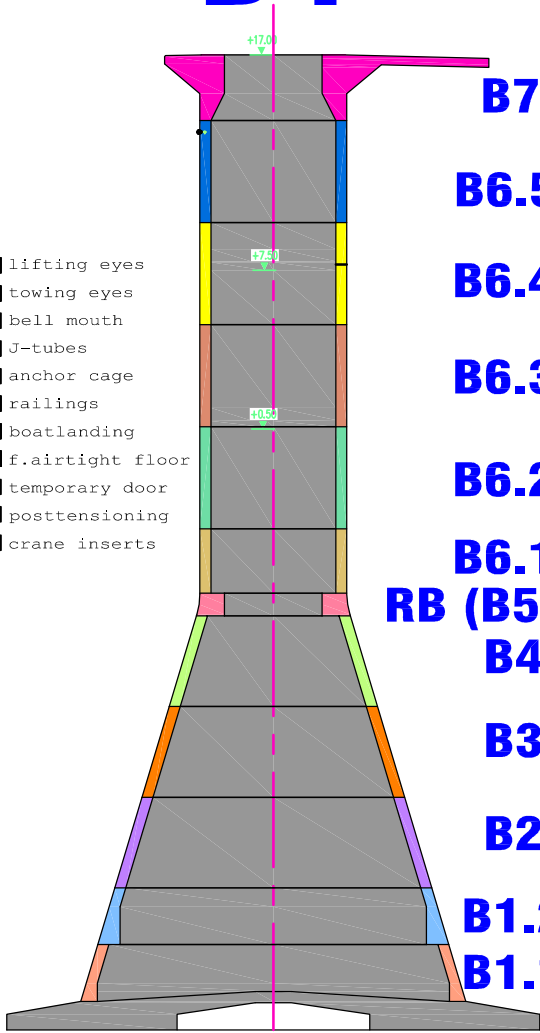
- lifting eyes
- towing eyes
- bell mouth
- J-tubes
- anchor cage
- railings
- boatlanding
- ☑ f.airtight floor
- temporary door
- posttensioning
- crane inserts



**B7**  
**B6.5**  
**B6.4**  
**B6.3**  
**B6.2**  
**B6.1**  
**RB (B5)**  
**B4**  
**B3**  
**B2**  
**B1.2**  
**B1.1**

# D4

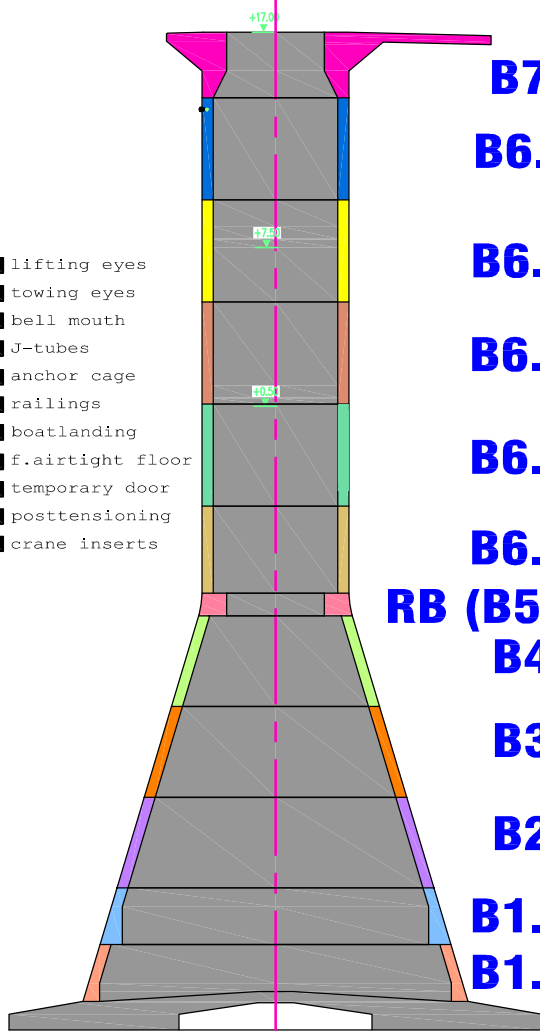
- lifting eyes
- towing eyes
- bell mouth
- J-tubes
- anchor cage
- railings
- boatlanding
- ☑ f.airtight floor
- temporary door
- posttensioning
- crane inserts



**B7**  
**B6.5**  
**B6.4**  
**B6.3**  
**B6.2**  
**B6.1**  
**RB (B5)**  
**B4**  
**B3**  
**B2**  
**B1.2**  
**B1.1**

# D5

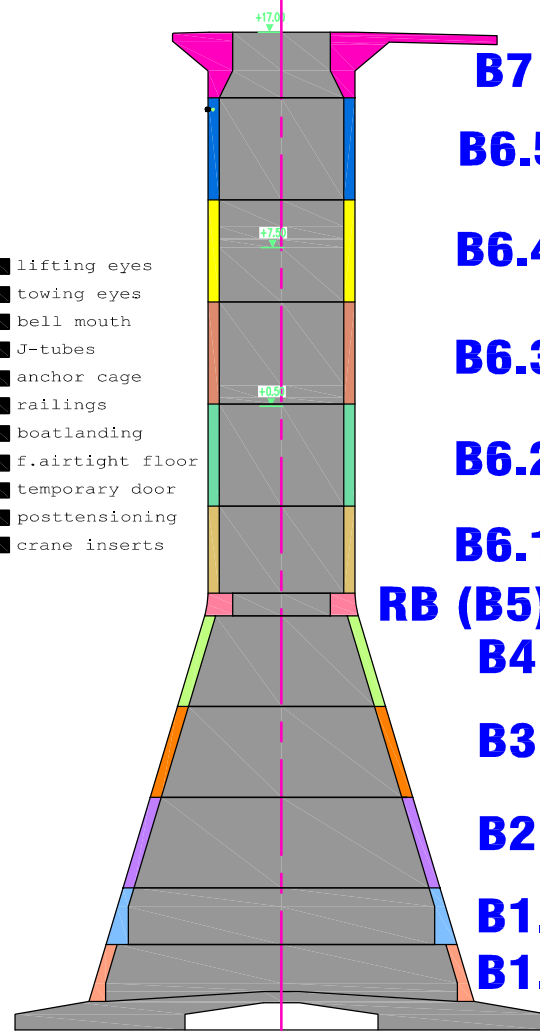
- lifting eyes
- towing eyes
- bell mouth
- J-tubes
- anchor cage
- railings
- boatlanding
- ☑ f.airtight floor
- temporary door
- posttensioning
- crane inserts



**B7**  
**B6.5**  
**B6.4**  
**B6.3**  
**B6.2**  
**B6.1**  
**RB (B5)**  
**B4**  
**B3**  
**B2**  
**B1.2**  
**B1.1**

# D6

- lifting eyes
- towing eyes
- bell mouth
- J-tubes
- anchor cage
- railings
- boatlanding
- ☑ f.airtight floor
- temporary door
- posttensioning
- crane inserts



**B7**  
**B6.5**  
**B6.4**  
**B6.3**  
**B6.2**  
**B6.1**  
**RB (B5)**  
**B4**  
**B3**  
**B2**  
**B1.2**  
**B1.1**

**Status end week 22**

**LEGEND:**

	<b>CONCRETED</b>		<b>INSTALLED</b>
	<b>REINFORCED</b>		<b>DELIVERED</b>
			<b>PARTLY DELIVERED</b>



C-Power Wind Farm Thornton Bank - Phase 1

Construction GBF Onshore 2008



GISTELSESTEENWEG 1  
 B-8400 OOSTENDE (BELGIUM)  
 TEL. +32 59 34 03 60 FAX +32 59 34 03 99  
 EMAIL: OOSTENDE@TECHNUM.BE

project number:  
 26 40379 200

drawing number: revision:  
 1 CPO MEC DRG 002 S

date: 29-5-2008

page: 1/1