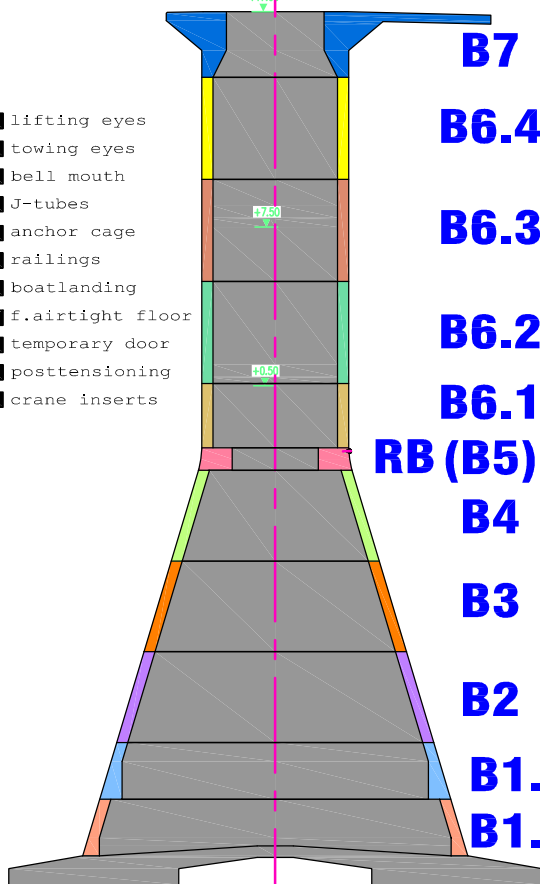


D1

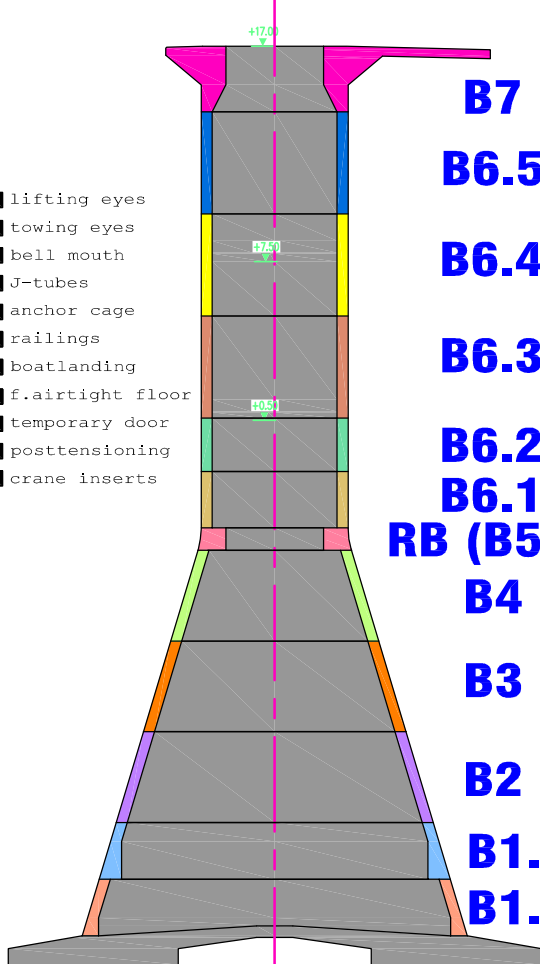
- lifting eyes
- towing eyes
- bell mouth
- J-tubes
- anchor cage
- railings
- boatlanding
- ☑ f.airtight floor
- temporary door
- posttensioning
- crane inserts



B7
B6.4
B6.3
B6.2
B6.1
RB (B5)
B4
B3
B2
B1.2
B1.1

D2

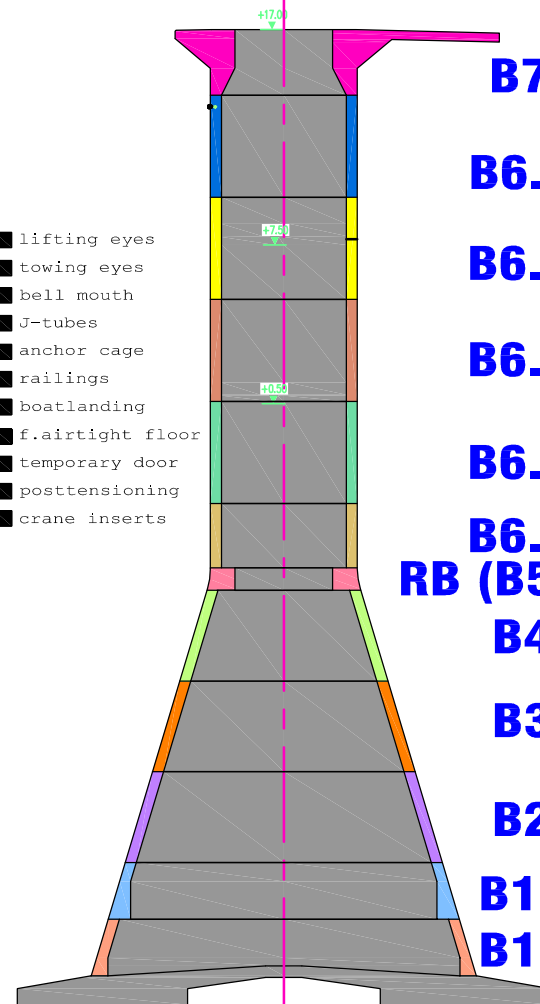
- lifting eyes
- towing eyes
- bell mouth
- J-tubes
- anchor cage
- railings
- boatlanding
- ☑ f.airtight floor
- temporary door
- posttensioning
- crane inserts



B7
B6.5
B6.4
B6.3
B6.2
B6.1
RB (B5)
B4
B3
B2
B1.2
B1.1

D3

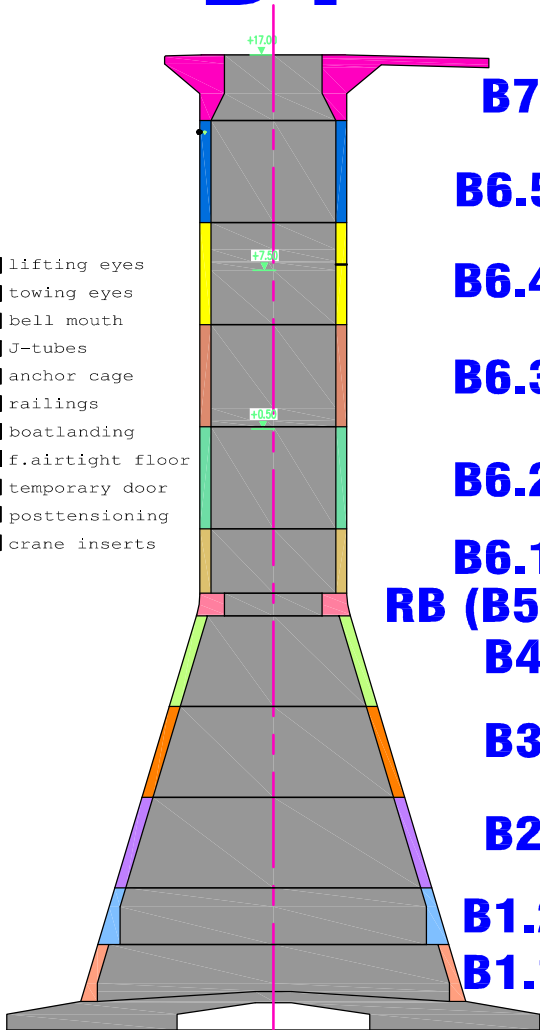
- lifting eyes
- towing eyes
- bell mouth
- J-tubes
- anchor cage
- railings
- boatlanding
- ☑ f.airtight floor
- temporary door
- posttensioning
- crane inserts



B7
B6.5
B6.4
B6.3
B6.2
B6.1
RB (B5)
B4
B3
B2
B1.2
B1.1

D4

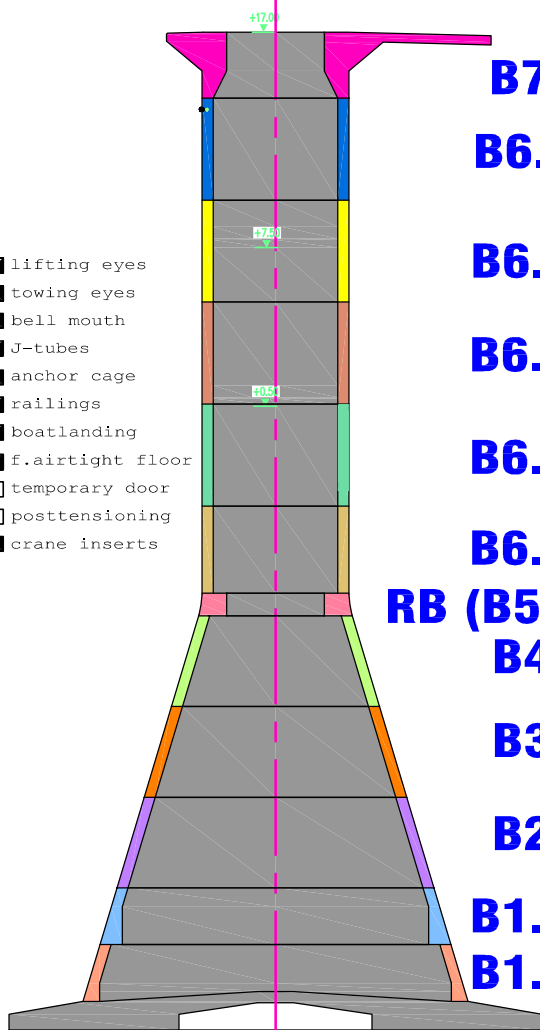
- lifting eyes
- towing eyes
- bell mouth
- ☑ J-tubes
- anchor cage
- railings
- boatlanding
- ☑ f.airtight floor
- temporary door
- posttensioning
- crane inserts



B7
B6.5
B6.4
B6.3
B6.2
B6.1
RB (B5)
B4
B3
B2
B1.2
B1.1

D5

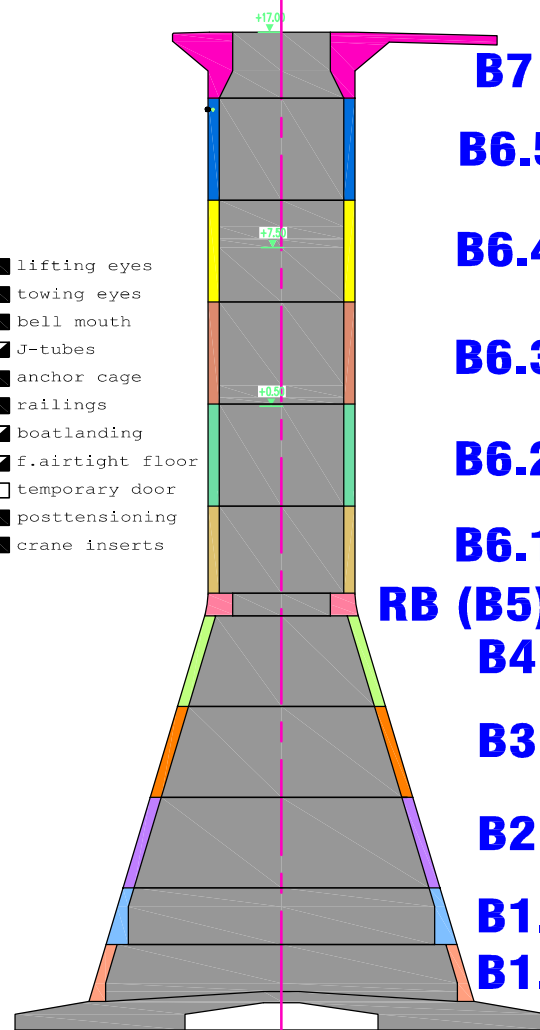
- ☑ lifting eyes
- towing eyes
- bell mouth
- ☑ J-tubes
- anchor cage
- railings
- boatlanding
- ☑ f.airtight floor
- ☐ temporary door
- ☐ posttensioning
- crane inserts



B7
B6.5
B6.4
B6.3
B6.2
B6.1
RB (B5)
B4
B3
B2
B1.2
B1.1

D6

- lifting eyes
- towing eyes
- bell mouth
- ☑ J-tubes
- anchor cage
- railings
- boatlanding
- ☑ f.airtight floor
- ☐ temporary door
- posttensioning
- crane inserts



B7
B6.5
B6.4
B6.3
B6.2
B6.1
RB (B5)
B4
B3
B2
B1.2
B1.1

Status end week 20

LEGEND:

	CONCRETED		INSTALLED
	REINFORCED		DELIVERED
			PARTLY DELIVERED



C-Power Wind Farm Thornton Bank - Phase 1

Construction GBF Onshore 2008



GISTELSESTEENWEG 1
 B-8400 OOSTENDE (BELGIUM)
 TEL. +32 59 34 03 60 FAX +32 59 34 03 99
 EMAIL: OOSTENDE@TECHNUM.BE

project number:
 26 40379 200

drawing number: revision:
 1 CPO MEC DRG 002 Q

date: 16-5-2008

page: 1/1