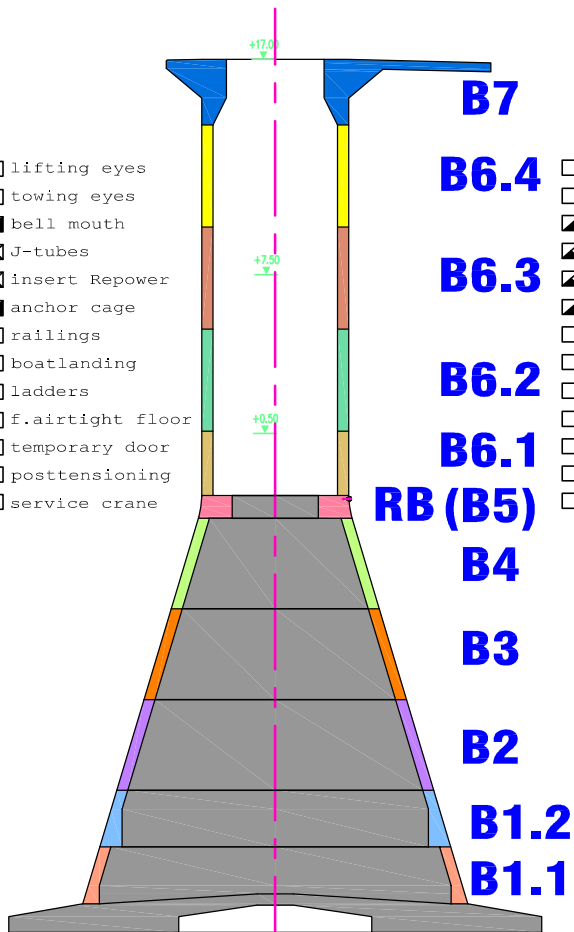


D1

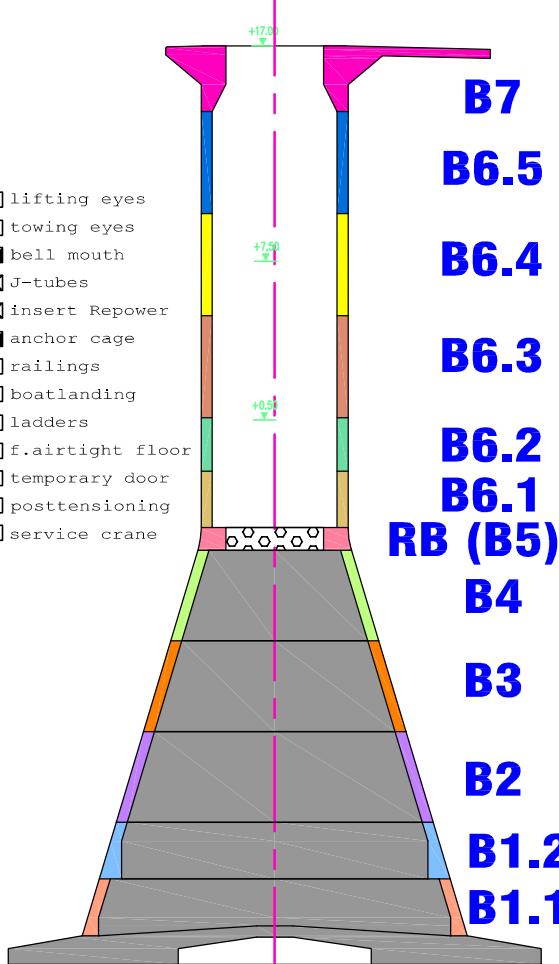
- lifting eyes
- towing eyes
- bell mouth
- J-tubes
- insert Repower
- anchor cage
- railings
- boatlanding
- ladders
- f.airtight floor
- temporary door
- posttensioning
- service crane



B7
B6.4
B6.3
B6.2
B6.1
RB (B5)
B4
B3
B2
B1.2
B1.1

D2

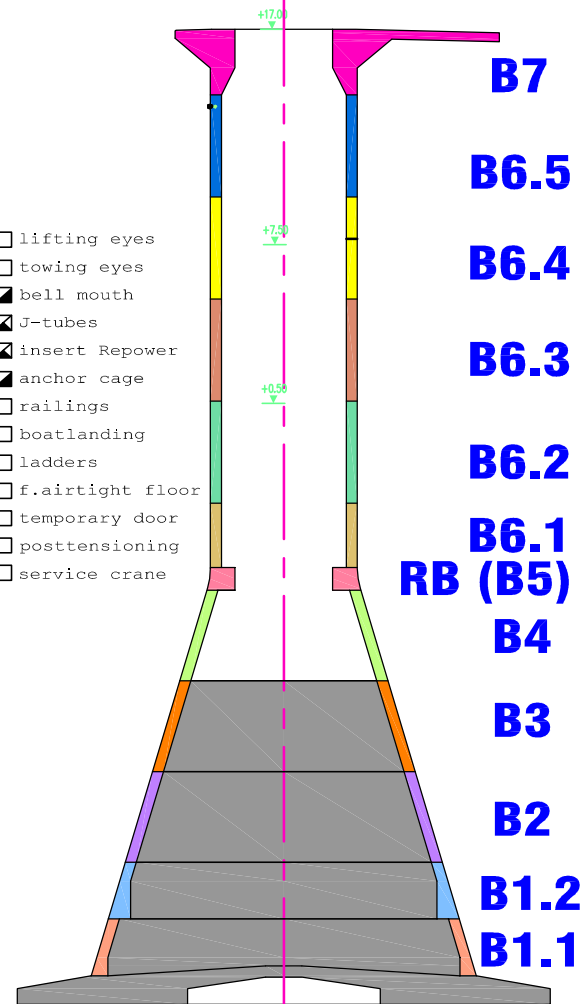
- lifting eyes
- towing eyes
- bell mouth
- J-tubes
- insert Repower
- anchor cage
- railings
- boatlanding
- ladders
- f.airtight floor
- temporary door
- posttensioning
- service crane



B7
B6.5
B6.4
B6.3
B6.2
B6.1
RB (B5)
B4
B3
B2
B1.2
B1.1

D3

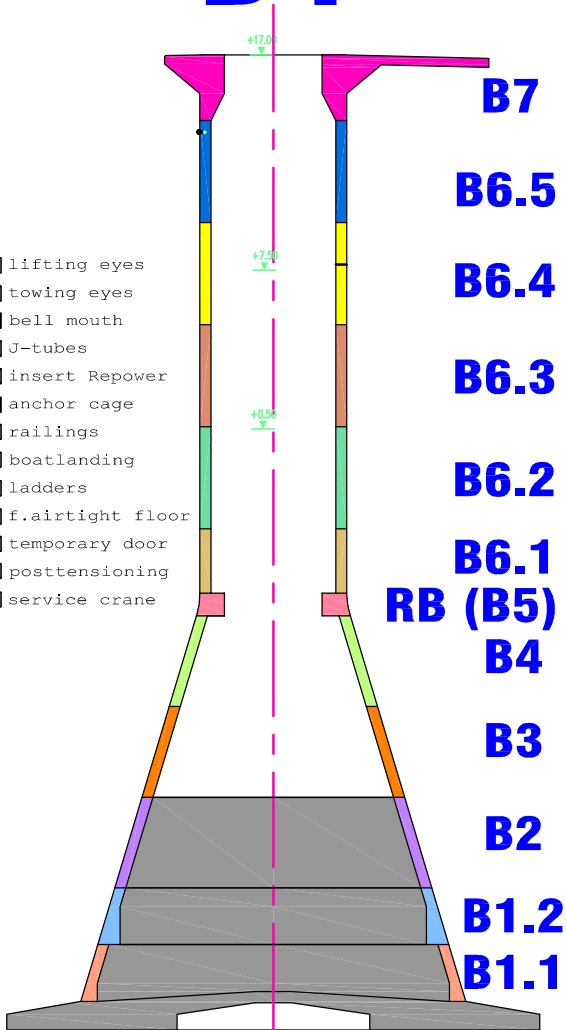
- lifting eyes
- towing eyes
- bell mouth
- J-tubes
- insert Repower
- anchor cage
- railings
- boatlanding
- ladders
- f.airtight floor
- temporary door
- posttensioning
- service crane



B7
B6.5
B6.4
B6.3
B6.2
B6.1
RB (B5)
B4
B3
B2
B1.2
B1.1

D4

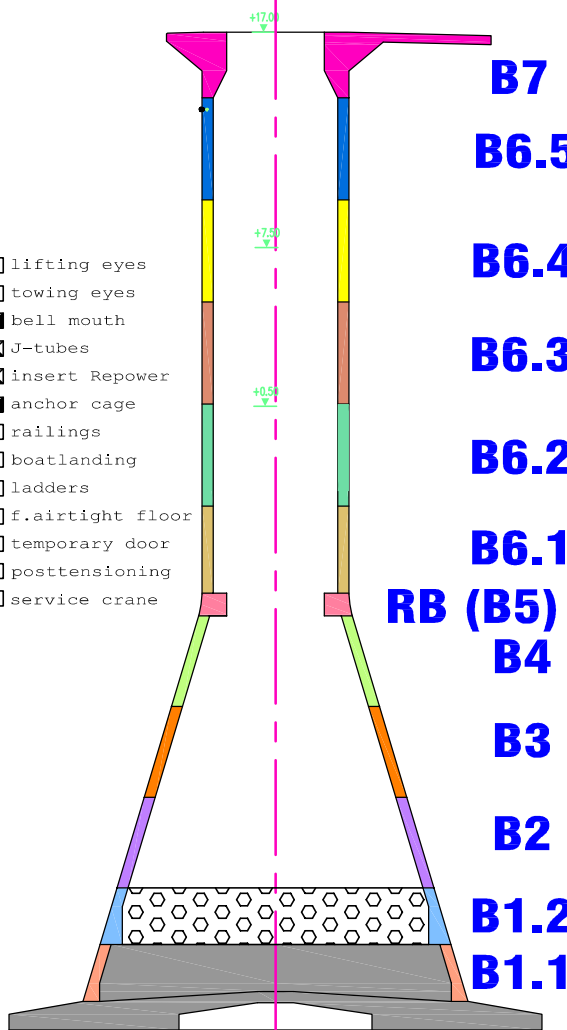
- lifting eyes
- towing eyes
- bell mouth
- J-tubes
- insert Repower
- anchor cage
- railings
- boatlanding
- ladders
- f.airtight floor
- temporary door
- posttensioning
- service crane



B7
B6.5
B6.4
B6.3
B6.2
B6.1
RB (B5)
B4
B3
B2
B1.2
B1.1

D5

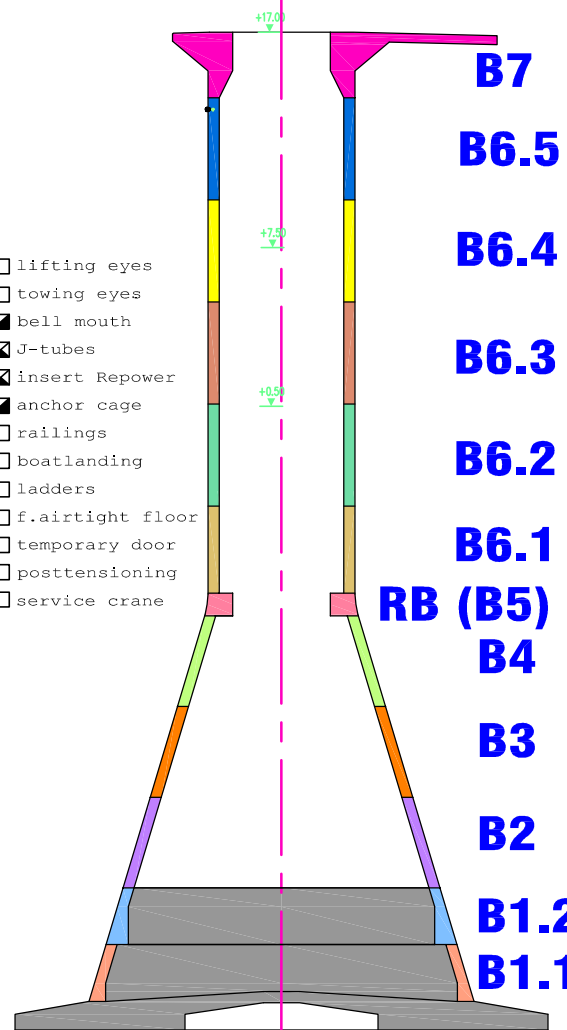
- lifting eyes
- towing eyes
- bell mouth
- J-tubes
- insert Repower
- anchor cage
- railings
- boatlanding
- ladders
- f.airtight floor
- temporary door
- posttensioning
- service crane



B7
B6.5
B6.4
B6.3
B6.2
B6.1
RB (B5)
B4
B3
B2
B1.2
B1.1

D6

- lifting eyes
- towing eyes
- bell mouth
- J-tubes
- insert Repower
- anchor cage
- railings
- boatlanding
- ladders
- f.airtight floor
- temporary door
- posttensioning
- service crane



B7
B6.5
B6.4
B6.3
B6.2
B6.1
RB (B5)
B4
B3
B2
B1.2
B1.1

Status end week 51

LEGEND:

	CONCRETED		INSTALLED
	REINFORCED		DELIVERED
			PARTLY DELIVERED



C-Power Wind Farm Thornton Bank - Phase 1

Construction GBF Onshore 2007



GISTELSESTEENWEG 1
 B-8400 OOSTENDE (BELGIUM)
 TEL. +32 59 34 03 60 FAX +32 59 34 03 99
 EMAIL: OOSTENDE@TECHNUM.BE

project number:
 26 | 40379 | 200

drawing number: | revision:
 1 | CPO | MEC | DRG | 001 | H

date: 21-12-2007

page: 1/1