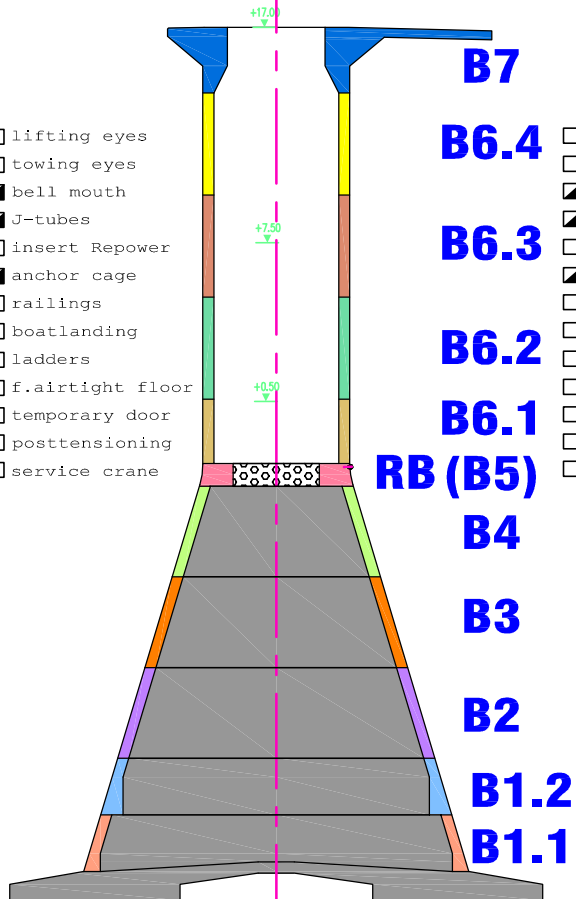


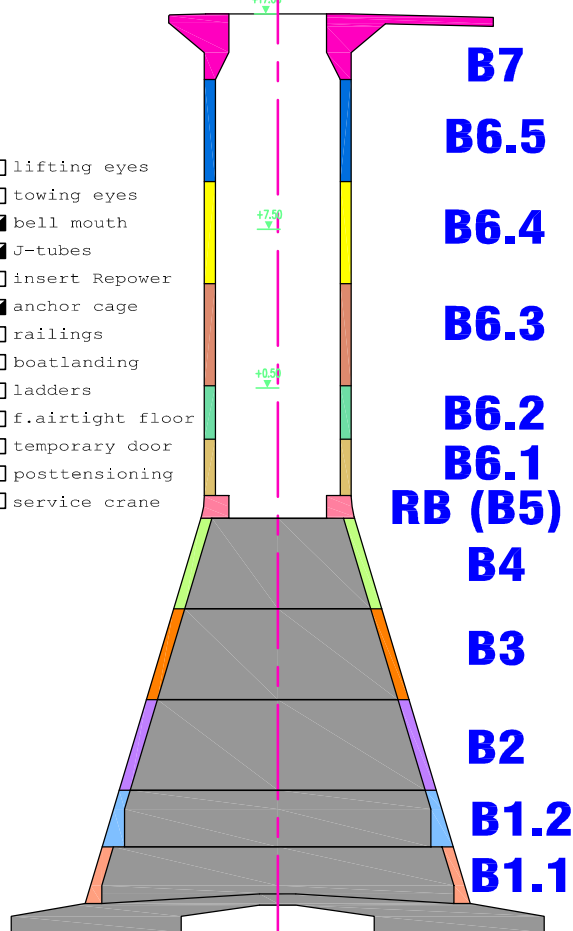
D1

- lifting eyes
- towing eyes
- bell mouth
- J-tubes
- insert Repower
- anchor cage
- railings
- boatlanding
- ladders
- f.airtight floor
- temporary door
- posttensioning
- service crane



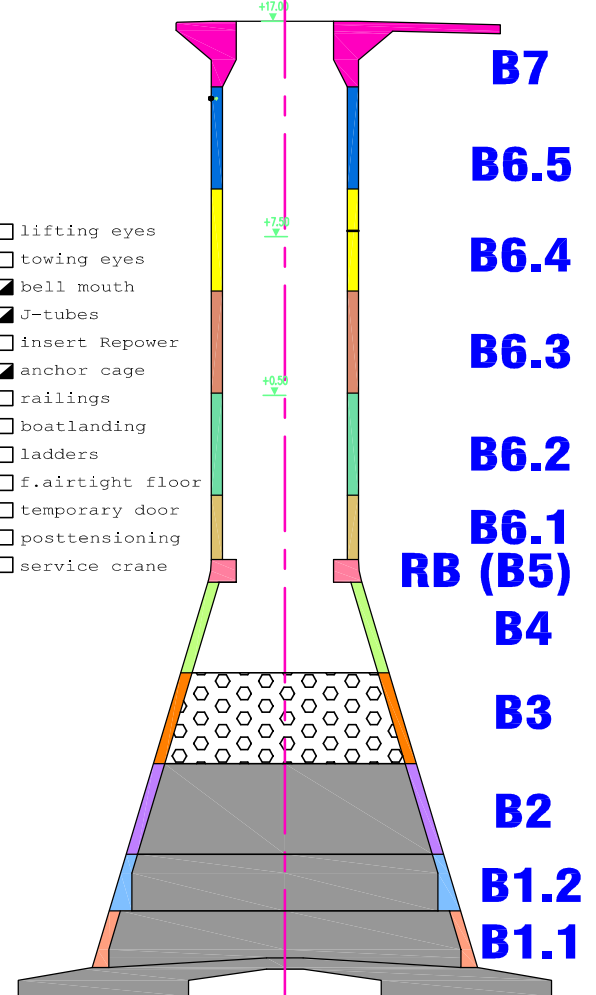
D2

- lifting eyes
- towing eyes
- bell mouth
- J-tubes
- insert Repower
- anchor cage
- railings
- boatlanding
- ladders
- f.airtight floor
- temporary door
- posttensioning
- service crane



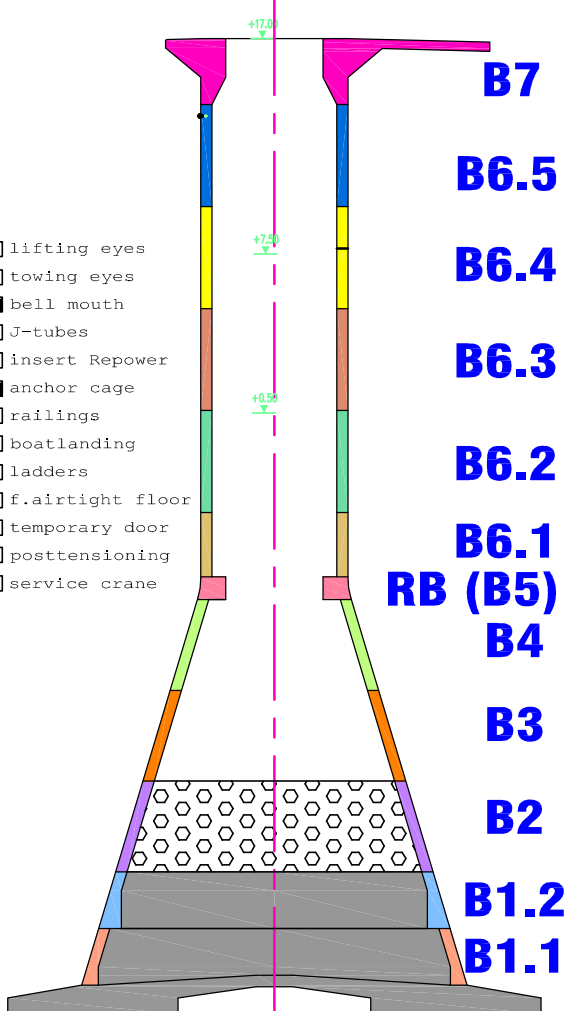
D3

- lifting eyes
- towing eyes
- bell mouth
- J-tubes
- insert Repower
- anchor cage
- railings
- boatlanding
- ladders
- f.airtight floor
- temporary door
- posttensioning
- service crane



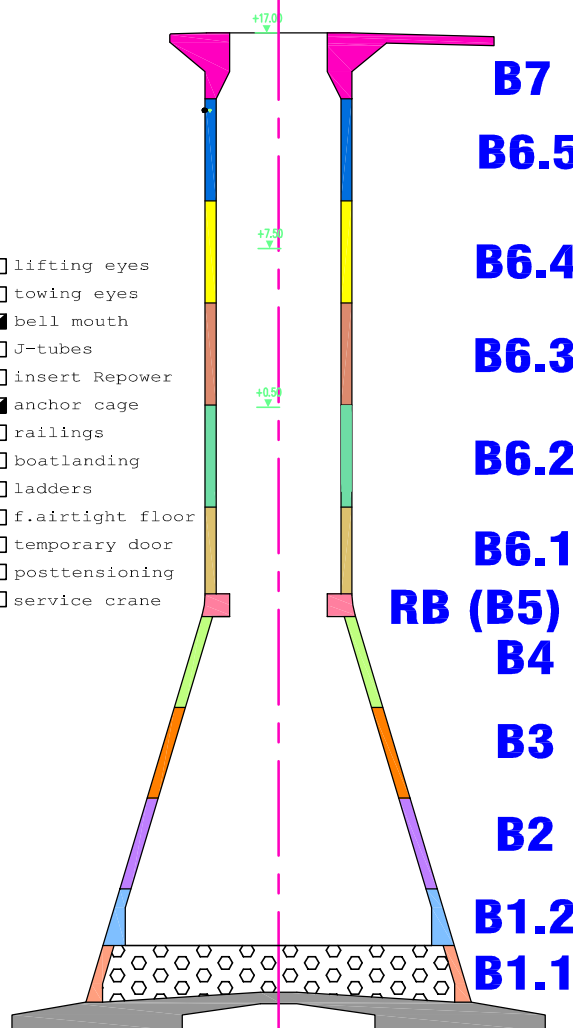
D4

- lifting eyes
- towing eyes
- bell mouth
- J-tubes
- insert Repower
- anchor cage
- railings
- boatlanding
- ladders
- f.airtight floor
- temporary door
- posttensioning
- service crane



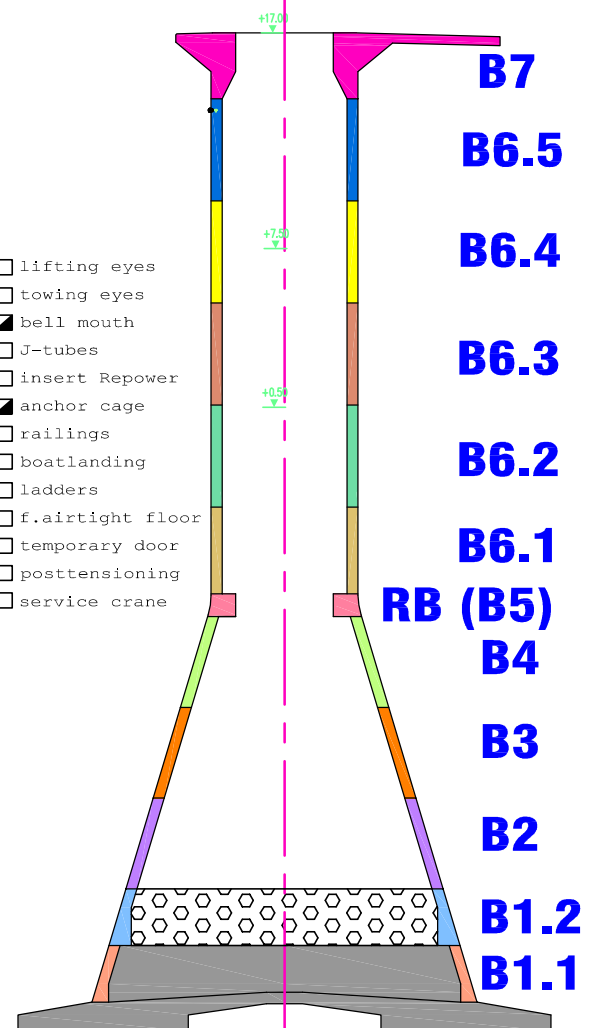
D5

- lifting eyes
- towing eyes
- bell mouth
- J-tubes
- insert Repower
- anchor cage
- railings
- boatlanding
- ladders
- f.airtight floor
- temporary door
- posttensioning
- service crane



D6

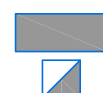
- lifting eyes
- towing eyes
- bell mouth
- J-tubes
- insert Repower
- anchor cage
- railings
- boatlanding
- ladders
- f.airtight floor
- temporary door
- posttensioning
- service crane



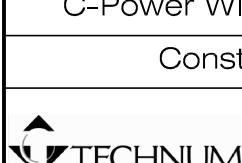
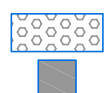
Status end week 49

LEGEND:

**CONCRETED
DELIVERED**



**REINFORCED
INSTALLED**



GISTELSESTEENWEG 1
B-8400 OOSTENDE (BELGIUM)
TEL. +32 59 34 03 60 FAX +32 59 34 03 99
EMAIL: OOSTENDE@TECHNUM.BE

project number:
26 40379 200
drawing number: 1 CPO MEC DRG 001 F revision:
date: 6-12-2007
page: 1/1