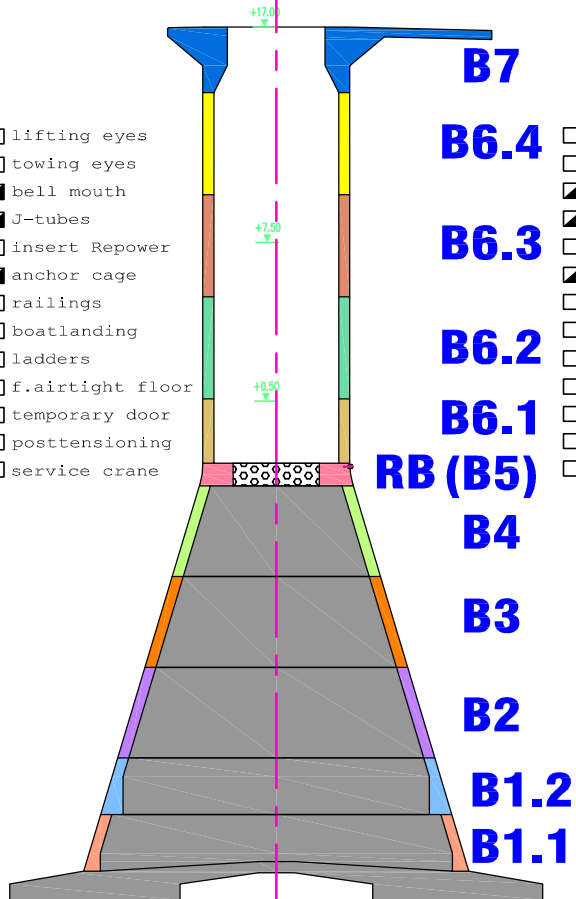


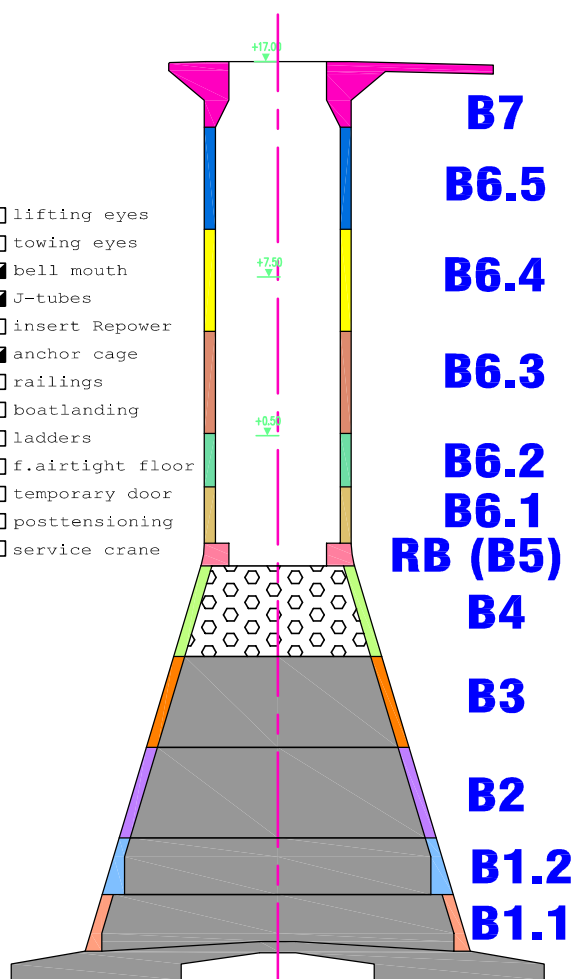
# D1

- lifting eyes
- towing eyes
- bell mouth
- J-tubes
- insert Repower
- anchor cage
- railings
- boatlanding
- ladders
- f.airtight floor
- temporary door
- posttensioning
- service crane



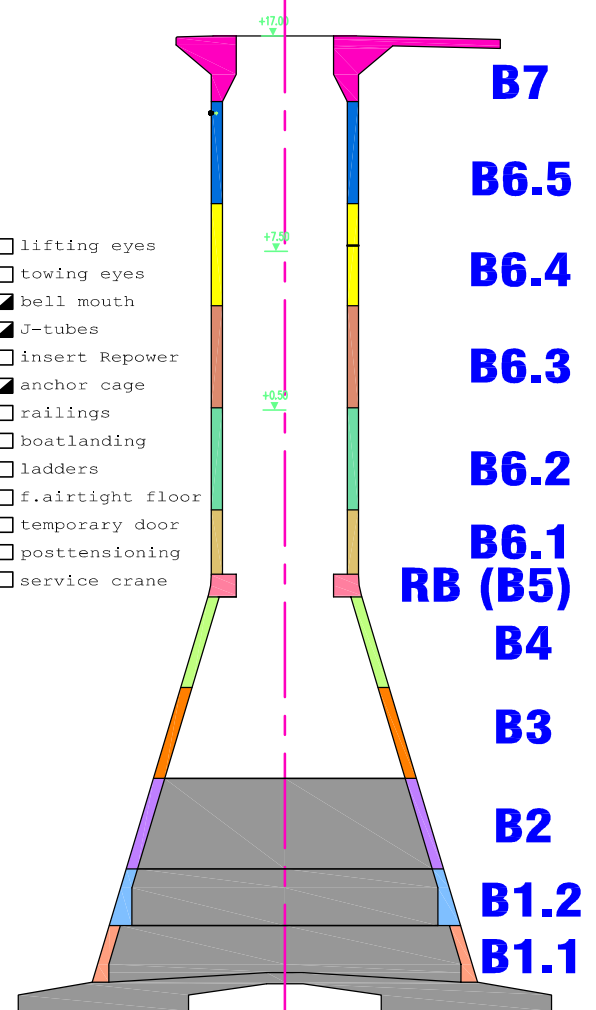
# D2

- lifting eyes
- towing eyes
- bell mouth
- J-tubes
- insert Repower
- anchor cage
- railings
- boatlanding
- ladders
- f.airtight floor
- temporary door
- posttensioning
- service crane



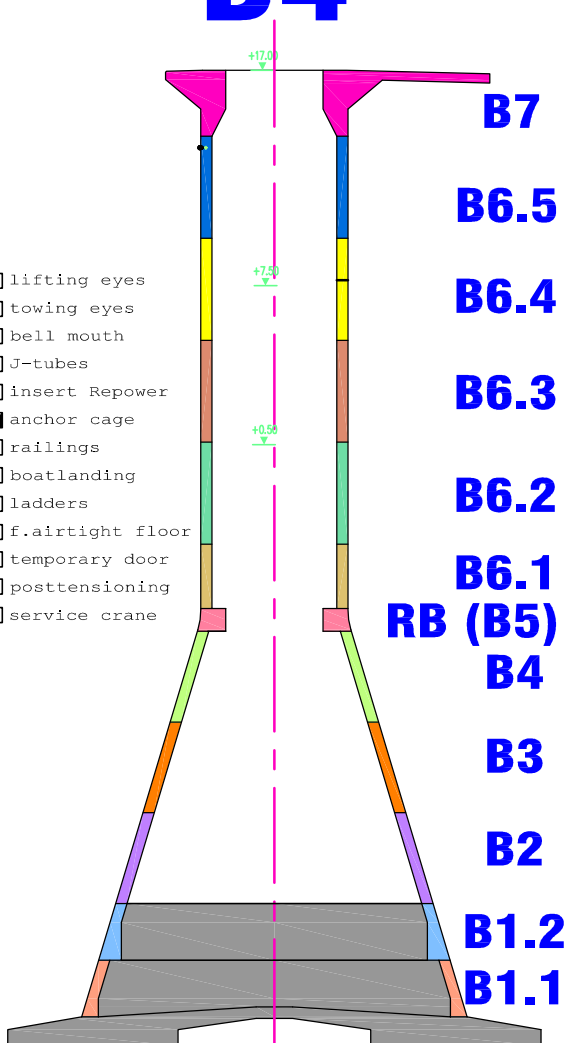
# D3

- lifting eyes
- towing eyes
- bell mouth
- J-tubes
- insert Repower
- anchor cage
- railings
- boatlanding
- ladders
- f.airtight floor
- temporary door
- posttensioning
- service crane



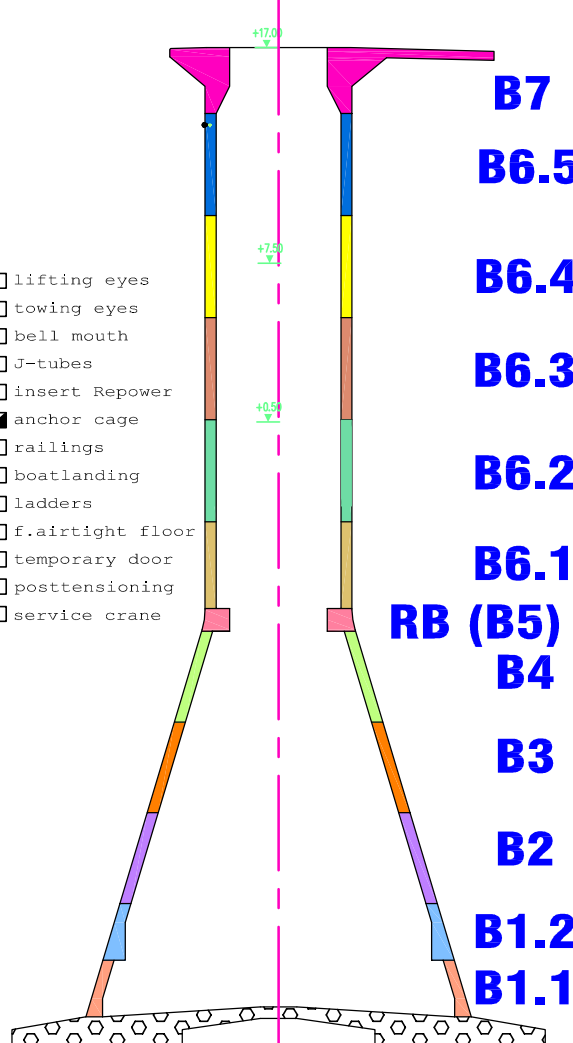
# D4

- lifting eyes
- towing eyes
- bell mouth
- J-tubes
- insert Repower
- anchor cage
- railings
- boatlanding
- ladders
- f.airtight floor
- temporary door
- posttensioning
- service crane



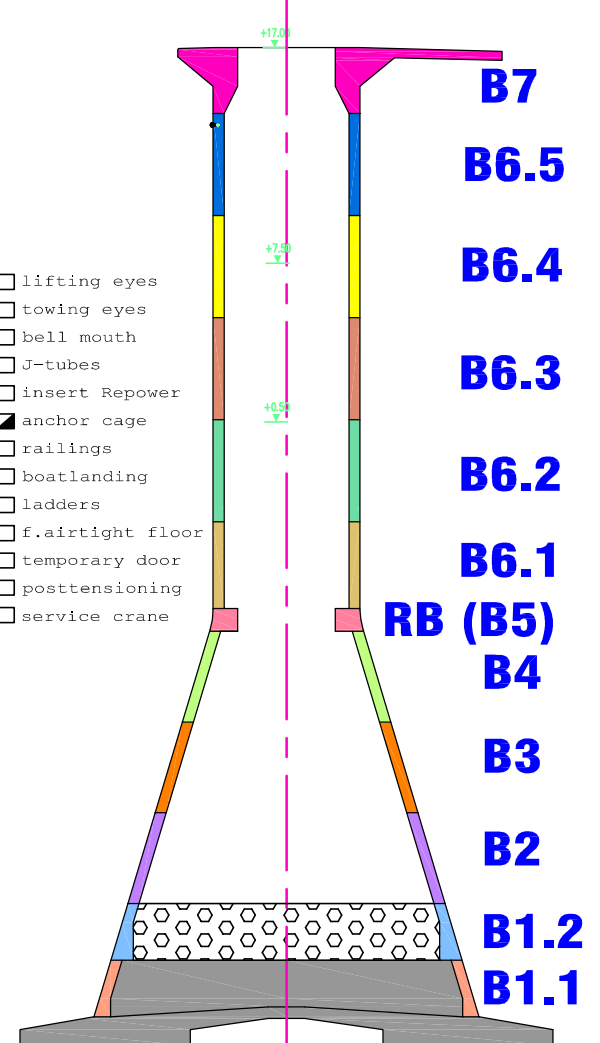
# D5

- lifting eyes
- towing eyes
- bell mouth
- J-tubes
- insert Repower
- anchor cage
- railings
- boatlanding
- ladders
- f.airtight floor
- temporary door
- posttensioning
- service crane



# D6

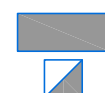
- lifting eyes
- towing eyes
- bell mouth
- J-tubes
- insert Repower
- anchor cage
- railings
- boatlanding
- ladders
- f.airtight floor
- temporary door
- posttensioning
- service crane



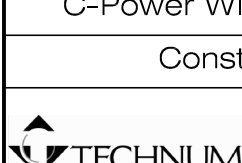
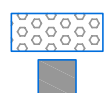
**Status end week 48**

**LEGEND:**

**CONCRETED**  
**DELIVERED**



**REINFORCED**  
**INSTALLED**



GISTELSESTEENWEG 1  
B-8400 OOSTENDE (BELGIUM)  
TEL. +32 59 34 03 60 FAX +32 59 34 03 99  
EMAIL: OOSTENDE@TECHNUM.BE

project number:  
26 40379 200  
drawing number: 1 CPO MEC DRG 001 E revision:  
date: 28-11-2007  
page: 1/1